



Artline

Tidewater Art Alliance for Visual Artists
Non-profit organization

Editor: Christopher Rumsey, editor@taava.com

Executive Officers

President — Ishina Feld
1st. V.P.— Jennifer Lycke
2nd. V.P.— Suzanne Watson
Treasurer— Lynne Kelly
Secretary - Anne May

Board of Directors

Ishina Feld, Jennifer Lycke, Suzanne Watson, Lynne Kelly, Anne May, Mary Ann Gamboa, Mike Young, Chris Rumsey, Daniel Hargrave CPA

Member Volunteers

Artistic Chair:
Mary Ann Gamboa 416-8384
Artline Editor:
Chris Rumsey 310-8510
Controller:
Mary Anne Katz 548-1312
Exhibitions/Events:
Position available
History:
Barbara Fulp 623-5511
Hospitality:
Tiffani Sheriff-Henry 753-1114
Internet Researcher:
Rowena Finn 374-3868
Mailing:
Betsy River Kennedy 434-8041
Eleanor Powell 627-0795
Membership:
Mike Young 624-9604
Photographers:
Al Benas 497-4245
Howard Martinez 625-4077
Printer:
Christopher Scott 880-5071
Program:
Jean Peacock 391-9034
Public Relations:
Norman Goodwin 423-6305
Publicity:
Jim Dees 851-9011
Recruiting:
Position available
Reception Host:
Position available
Telephone Tree:
Elaine Hampton 930-2021
Volunteer Coordinator:
Rieneke Leenders 499-0873
Website:
Jennifer Lycke 477-7914
Writing Correspondent:
Eloise Mayo 563-2680

President's Letter

Hello members and Happy Valentine's Day!

We have had a very exiting January. This month we had an opening of a special exhibit with a theme of "Dare to Dream" followed up with an election meeting. What a month! You never know what you can do until you're doing it or you already did it. Wow; what an attendance at One Eleven Art. It was bursting at the seams.

The election meeting was scarcely attended, maybe because we didn't have any program or because we had the opening Friday before the meeting, or just maybe because January is a very busy month for all of us. All the nominated officers accepted their nomination, some of them in absentia.

We have a new President elect: Ms. Suzanne Watson, V.P.s Mary Anne Gamboa

and Betsy River Kennedy. The Treasurer Lynne Kelly and the secretary Anne May are continuing in their positions. Newly elected officers will take their post July 1 2008, the time of membership renewal, and there is still time for volunteering. We are still in need of volunteers. If you like to volunteer give us a call.

At this time the board is contemplating increasing the compensation for TAA jurors. We have been paying the same amount for the last 6 years or so. I think it is time for an increase. We already increased the scale for reimbursement for our speakers. We quadrupled it since I took office in 2005. We also are revising the grant/donation program. It isn't working the way it should. We still plan on awarding \$1,000 to a deserving organization. We



had several applications and none of them really fit our profile.

Our Portfolio exhibit in Court House Gallery is on the way and looking pretty good. We had lots of interest – more than in previous years. The opening is on Thursday, February 7th and that means no membership meeting this month.

See you at the opening!

Ishina

No Meeting in February

Please come to the opening of the
PORTFOLIO EXHIBITION
Thursday, February 7

Courthouse Galleries, Corner of High Street & Court Street,
Historic Olde Towne Portsmouth
6:00 – 8:00 PM

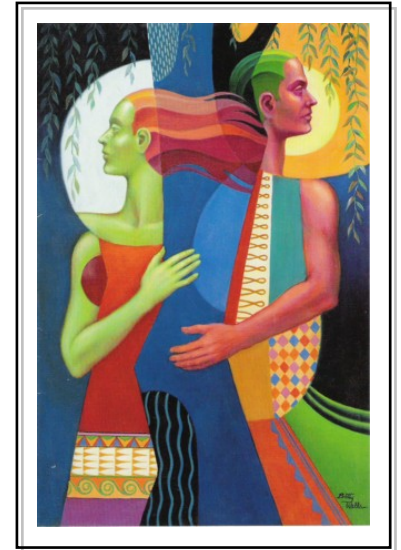
Artline Submissions:

*In order for **Kudos Korner** to applaud TAA Members, it is important for individual artists to submit their own good deeds! The information used in **Call for Artists** and **Educational** articles are based on submissions and documented hearsay. Submissions can be made via email to editor@taava.com by the 15th of every month for the next edition of our Artline Newsletter.*

Kudos Korner

Betty Wells had a solo exhibition of oil paintings at the Mad Hatter Gallery in Farmville, VA during the month of November 2007.

Past President Myreen (Rennie) Moore Nicholson of Norfolk was cited recently in the Ontario, California newspaper as an established art appraisal expert in the *Antiques* column of Larry Cox. She has Master's from both UNC Chapel Hill and Old Dominion University (included Studio Art and Art History). She was certified for teaching by the state of Virginia in Art and Media at the Master's level in 1965.



"Tree Huggers" by Betty Wells

Classified Ad

Everett's Watercolors of Chesapeake presents a **Tom Lynch Watercolor Workshop** May 8-10, 2008, Demo May 7. Contact Everett at everettwc@aol.com, (757) 410-9691 for more information.

Announcement

To exhibit chairs and all volunteers: Please inform Mary Anne Katz (TAA Controller) of all volunteer activities for 2007-2008. Email davemak@cox.net or phone 757-548-1312

TAA's Theme Exhibit

Name: "Free Spirit"

Location: Suffolk Cultural Arts Center.

Juror: TBA

Exhibit duration: April 19th through May 16th

Deliver work: on April 12th, from 10am to 5pm.

Judging of art: April 13th

Opening Reception: April 19th from 6pm to 9pm

Collect Unselected work: April 14th, 10am to 5pm.

Pick up Exhibited Work: May 17th, 10am to 5pm.

Entrance **fee is \$20** for up to 3 pieces, additional pieces are \$ 5 each and up to 5 pieces.

Please check the prospectus for dimensional restriction and other details. Entries must have been completed within last two years,

Prospectus will come in next issue and also will be available on our website: www.taava.com

TAA Election Results

Elections were held on January 13th for officers for next season 2008/2009 starting July 1st 2008

Congratulations to:

President: Suzanne Watson

1st Vice President: Mary Anne Gamboa

2nd Vice President: Betsy River Kennedy

Secretary: Anne May

Treasurer: Lynne Kelly



Volunteers needed!

For our last exhibit of the year the Juried Theme show "Free Spirit" in Suffolk SCAC we still need a few good souls to volunteer.

Chairs - Tiffany Henry 753-1114

Betsy River Kennedy 434-8041

Please call if you're interested!

“Dare to Dream”

By Suzanne Watson, exhibition chair

Held at: ONE ELEVEN ART GALLERY

Juror: Chris Tompkins

Awards winners:

- 1st - Best in Show –RIENEKE LEENDERS
- 2nd -Award of Excellence-BARBARA LOOMIS
- 3rd - Award of Merit –CHRISTOPHER RUMSEY
- Honorable mention-BETTY SCOTT OWEN
- Honorable mention-KAREN SULLIVAN

Number of pieces submitted: 48 with 30 accepted

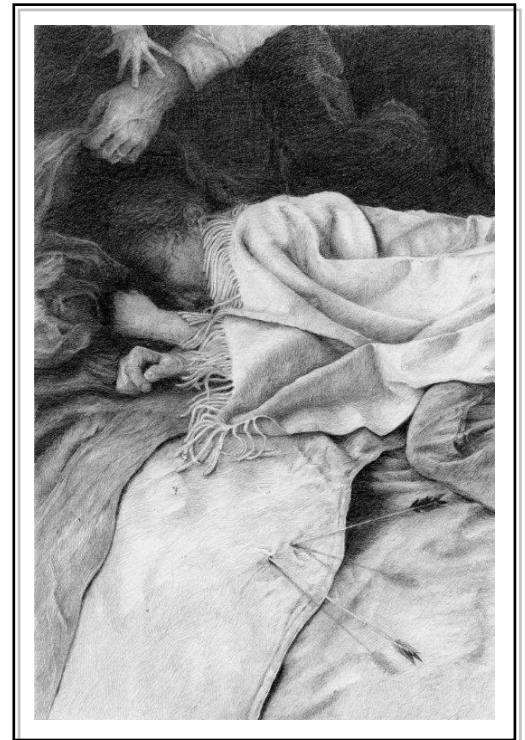
Number of participating members: 30 with 20 accepted (2 new members)

Estimated number of visitors at the opening/reception: 150-200

A big thank you to all the TAA volunteers: Ishina Feld, Rieneke Leenders, Barbara Loomis, Nancy Basin, David Chance, Betty Scott Owen, Tiffany Henry, Carol Chewning, and Mary Anne Waterfield.



Opening evening - Photo by Al Benas



2nd: “Arrow” – Barbara Loomis



1st: “Self Portraits – I am All of You” – Rieneke Leenders

Juror Statement – Chris Tompkins

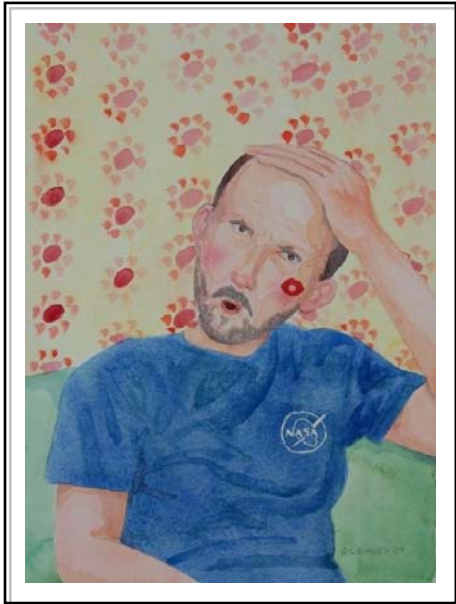
The Dare to Dream Show asked artists to “bring your most daring vision that communicates your most delicious dream”. Having read the prospectus and thinking that many of us aren’t willing to share such things for a variety of reasons, I wondered what kind of work would be submitted.

In fact the work ranged from photographs that dealt primarily with formal concerns to images that dealt with dark landscape visions not unlike those of Albert Pinkham Ryder and even included images that explored “delicious” geometry.

I narrowed down my selections using the stated theme as a rough guide. Works that failed to address the dream issue weren’t included. Craftsmanship played an important role in selected works, as did the depth of questioning or exploration. Some such as the Janus-headed dreamer were funny, while others seemed to be joyous celebrations of the odd juxtapositions that occur in dreams (at least in mine!)

My choice for “Best in Show” was certainly a well-crafted work, but more importantly, it deals with the dream of true equality through sociological questions of ethnicity and physicality, and in so doing becomes a portrait that asks an important question about who we are.

“Dare to Dream” (cont’d)



HM: “Family” – Karen Sullivan

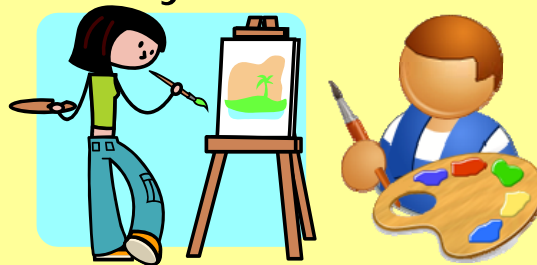


3rd: “NASA Surprise” – Christopher Rumsey HM: “Primal Echoes” – Betty Scott Owen

Group photo by All Benas at right – winners with Chair from the left Suzanne Watson, Karen Sullivan, Betty Scott Owen, Rieneke Leenders, Christopher Rumsey and Barbara Loomis

Studio rentals and Teaching opportunities
are available at the *newly opened*
One Eleven Art Gallery & Studios!

111 Pennsylvania Ave, Norfolk



Contact Suzanne Watson

Suzanne@1eleven.org or call 625-1110 for
more information.



Call to Artists

18th Annual Mid-Atlantic Art Exhibition "Open to all Media", April 25 - June 8, 2008. Artists over the age of 18 are eligible to enter. Artwork must be original, completed within the last two years, and not previously shown at d'ART Center. Download information at http://72.52.79.116/assets/files/Downloads/dART_MidAtlantic_08_Application.pdf. A non-refundable fee of \$30 for up to 5 slides or images must accompany form, Payable to the d'ART Center. Questions: 757-625- 4211, email connect@d-artcenter.org. **DEADLINE MARCH 3, 2008.**

Works of Art On Paper. Calls for Submissions, *Acrylic, Digital Media, Illustration, Mixed media, Watercolor, Oil, Pastel, Photography.* June 21, 2008-July 14, 2008. Entry Form: Send SASE to Long Beach Island Foundation of the Arts and Sciences, 120 Long Beach Boulevard, Loveladies, New Jersey 08008 or gallery@lbifoundation.org. Long Beach Island Foundation of the Arts & Sciences, 120 Long Beach Boulevard, 08008, Loveladies, New Jersey. **DEADLINE FEBRUARY 28, 2008.**

Virginia Regional Exhibition. Sponsor: The Montpelier Center for Arts and Education, Montpelier, VA. Open to Virginia Resident professional Artists, 2-D Media, No Photo, completed in the last 2 years. Wood or metal frames/wired Ready to hang. \$20 Up to 2 works. Show April 26 ,2008 – June 28, 2008. The Montpelier Center for Arts & Education, P.O. Box 82 Montpelier, VA 23192, Ph. 804-883-7378, Fax: 804-883-1199, www.montpeliercenter.org. Prospectus email: montpeliercenter@earthlink.net. **DEADLINE MARCH 3, 2008.**

Transforming the Elements. Artisans Center of Virginia May 15- June 25, 2008. Prospectus: available from the website www.artisanscenterofvirginia.org, mail SASE to Artisans Center of Virginia, PO Box 452, Waynesboro, VA 22980 or email acv@ntelos.net. Eligible media/requirements: All fine craft media, cash awards. Opening/closing dates: May 15-June 25, 2008. Entry fee: \$25.00. For more information or directions call 540-946-3294, email ACV@ntelos.net. **DEADLINE MARCH 7, 2008.**

Academy of Fine Arts Annual National Juried Art Exhibition. The Academy of Fine Arts in Lynchburg, VA announces a call to artists for its annual national juried art exhibition, held April 4-25, 2008. Open to U.S. residents, 18 years or older, working in the following disciplines: painting, sculpture, drawing, printmaking, fiber and mixed media. No photography, video or installations accepted. Pieces must not exceed 60" in any direction. Entries must have been completed after January 1, 2006, and not previously exhibited in a Lynchburg juried art show. \$25 entry fee. For prospectus, visit <http://www.AcademyFineArts.com> or send a SASE to: Academy of Fine Arts, 600 Main Street, Lynchburg, VA 24504. Questions? Please contact Ted Batt at tbatt@academyfinearts.com or call 434-528-3256 **DEADLINE FEBRUARY 15, 2008.**

Art and Addiction call for entries. The Innovators Combating Substance Abuse Program at The Johns Hopkins University School of Medicine is pleased to issue a call to artists whose original art will be selected to appear in a forthcoming book on art and addiction to be published by the Johns Hopkins University Press. Artists are invited to submit original artwork on the theme of drug addiction and recovery (drugs include alcohol, tobacco, illegal, or prescription drugs). Works in all media including video will be accepted. No entry fees. For guidelines and submission form, visit <http://www.innovatorsawards.org>. Questions? Please contact the Innovators Program at innovatorsawards@jhmi.edu or call 443 287-3915. **DEADLINE MARCH 1, 2008.**

24th Annual Photography Exhibit, Suffolk Museum. March 7 – April 11, 2008. Open to all professional and amateur photographers. Work must have been completed in the last two years and not previously exhibited at the Suffolk Museum. Entry Fee: For \$20.00, photographers may submit a maximum of three entries. Artists must deliver their work to the Suffolk Museum on Friday, February 29 from 10-5 or Saturday March 1, from 10-5. For information, contact the Suffolk Museum, 923-2371, nkinzinger@city.suffolk.va.us.

The following TAA positions are open:

Exhibition/Events Coordinator
Recruiting Coordinator

For more information contact Volunteer Coordinator Rieneke Leenders 499-0873

Member's Ad Rates:

1 Page \$75 1/2 Page \$40 1/4 Page \$25
1/8 Page \$15 1/2 inch Classified Ad \$3

For non-member rates or for more information, please e-mail editor@taava.com

American Frame

Money BACK

5 %

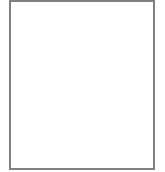
Each quarter American Frame

(www.americanframe.com) sends us a check for 5% of the total amount our members purchase from them. Earn money for us while framing your latest masterpiece.

Call for your catalog now!

1 (800) 537-0944

Tidewater Art Alliance
P.O.Box 3093
Norfolk, Virginia 23514-3093



Calendar 2008

- Feb 7th - Thursday, Opening Reception for Portfolio Exhibition, Courthouse Galleries, Portsmouth, 6-8 PM
- Mar 9th - Sunday, 2:00 PM, Meeting; location TBA
- Apr 19th - Saturday, from 6 -9PM
Opening of Theme Show "FREE SPIRIT" in SCAC in Suffolk.
NO Meeting